

PROJECT: _____
 CATALOG #: _____
 FIXTURE TYPE: _____
 NOTES: _____

HC Circular High Bay Gen 1



PERFORMANCE INFORMATION

SERIES NUMBER	WATT	LUMENS	CCT
HC 95 G1 5K F	67W	9,400	5000K
HC 135 G1 5K F	97W	13,700	5000K
HC 190 G1 5K F	140W	19,100	5000K
HC 250 G1 5K F	180W	25,000	5000K

The **HC Series Circular High Bay** is the ideal choice for replacing 200W to 400W metal halides. With sealed die-cast housing and simple mounting options, this luminaire is suitable for commercial, retail, and institutional applications including gymnasiums, factories, and warehouses.

APPLICATIONS

Commercial, Retail, and Institutional Applications, etc.

REPLACEMENT

200W - 400W MH

ORDERING GUIDE						
EXAMPLE: HC 95 G1 5K F						
Luminaire Type	Lumen Output	Generation	Voltage	CCT	Finish	Optic Lens
<input type="checkbox"/> HC Circular High Bay	<input type="checkbox"/> 95 9,400 Lumens <input type="checkbox"/> 135 13,700 Lumens* <input type="checkbox"/> 190 19,100 Lumens* <input type="checkbox"/> 250 25,000 Lumens	<input checked="" type="checkbox"/> G1	<input checked="" type="checkbox"/> BLANK = 120-277V <input checked="" type="checkbox"/> HVU = 347-480V	<input type="checkbox"/> 4K 4000K <input checked="" type="checkbox"/> 5K 5000K	<input type="checkbox"/> BLANK = White	<input checked="" type="checkbox"/> F =Frosted Lens

*Only available in 4000K CCT.

OPTIONS		
Individual Control	Surge Protector	Cord Sets
EL UNV-16W		
<input type="checkbox"/> MS-ACI-01 =Motion Sensor 120-277V (Choose 1) <input type="checkbox"/> L3 = 2x Lens (Max 20ft Mounting Height) <input type="checkbox"/> L7 = 2.5x Lens (Max 40ft Mounting Height) <input type="checkbox"/> RM51 = Remote Control <input type="checkbox"/> EL UNV-16W = Emergency Battery Kit	<input type="checkbox"/> SPD-277 = 5KA/10KV Surge Protection device, single phase protection with 120-277V input <input type="checkbox"/> SPD-480 = 10KA/20KV Surge Protection device, single phase protection with 277-480V input	<input type="checkbox"/> Cords Standard 3ft power cord, 18 gauge with 3 conductors <input type="checkbox"/> CS1 6 ft power cord, Straight Cord, 18 gauge, 3 conductors, Black, Voltage will match fixture <input type="checkbox"/> CS2 6 ft power cord, Twist-Lock Plug Type, 3 conductors, Black, Optional with L5-15P, L5-20P, L6-15P, L7-15P, L7-20P, L8-20P. Gauge and voltage will match fixture. (Please confirm with SLG Sales before placing the order) <input type="checkbox"/> CS4 6 ft power cord, 16 Gauge, 3 conductors, SO Black Cord, No Plug, Voltage will match fixture <input type="checkbox"/> CS5 3.5 ft power cord, 18 Gauge, 5 conductors (Bring dimming leads out of fixture), Black cord, No Plug, Voltage will match fixture

Due to continuous product improvements, specification and/or equipment updates may change without notice.

SPECIFICATIONS

HOUSING

Sealed die cast housing with stainless steel fasteners is suitable for indoor and outdoor applications.

AMBIENT TEMPERATURE

Suitable for use in -40°C to 55°C (-40°F to 131 °F)

MOUNTING

Hook mount and pendent mount with conduit available

EFFICACY

Up to 140 lumens per watt (see individual wattage data)

CCT AND CRI

4000K and 5000K CCT available; 70CRI

OPTICS

Polycarbonate optical lens with heat resistance

WARRANTY

10-year limited warranty.

ELECTRICAL

50/60Hz available in 120-277V. Standard 0-10V dimming. Optional 347-480V for 140W and 180W.

ENERGY DATA

Power factor above 90%.

FINISH

Polyester Powder White finish with superior corrosion resistance and maximum durability.

CERTIFICATIONS

UL Listed for wet locations, IP65 Rating. FCC compliant. RoHs compliant. Design Lights Consortium® (DLC) Standard 5.1 qualified product. Some product models may not be DLC qualified. Please visit www.slgus.com to confirm which versions are confirmed.

OPTIONS



MS-ACI-01

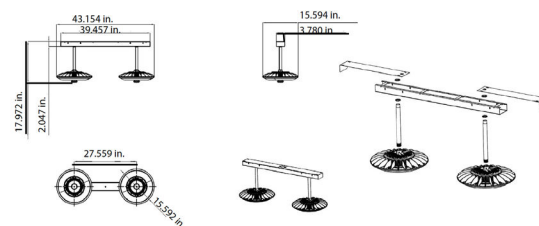
Remote Configurable Dimmable Sensor



MSB-13-L3/L7

Lens

MOUNTING



Twin Arm Mount

Specifications

Input Voltage

AC120-277V

Frequency

50/60Hz

Input Current

6A Max @ 120V, 2.5A Max @ 277V

Input Power

700W Max

Output Voltage

AC120-277V

Output Current

6A Max @ 120V, 2.5A Max @ 277V

Output Power

700W Max

Sinking Current

10mA Max

Mounting Height

20-40 ft

IP Rating

IP66

Dimming

0-10V DC 10mA Max

Detection Range

32 - 80 ft

Operating Temperature

-30°C to 65°C (-22°F to 149°F)

Warranty

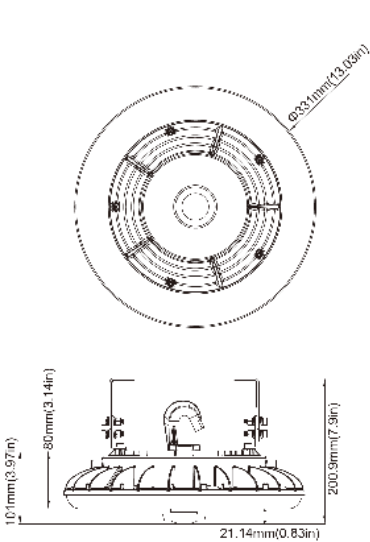
5 Year warranty

Due to continuous product improvements, specification and/or equipment updates may change without notice.

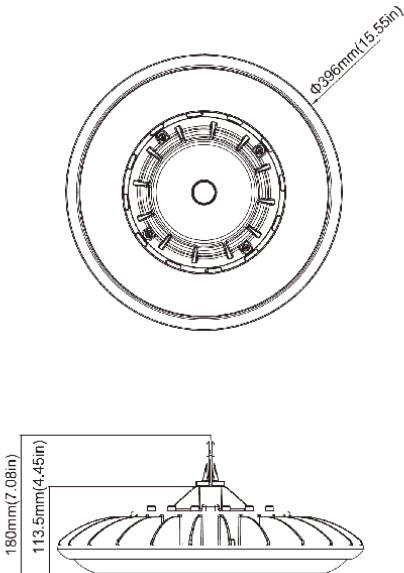
DIMENSIONS

WEIGHT

HC 95 G1: 5.710 LBS
HC 135 G1: 5.952 LBS
HC 190 G1: 9.220 LBS
HC 250 G1: 9.480 LBS

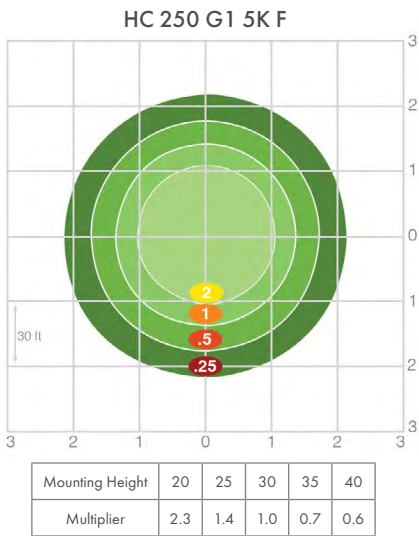


SMALL
HC 95 G1
HC 135 G1



LARGE
HC 190 G1
HC 250 G1

PHOTOMETRIC



Due to continuous product improvements, specification and/or equipment updates may change without notice.

ELECTRICAL LOAD

Series Number	Wattage	Current (A)					
		120V	208V	240V	277V	347V	480V
HC 95 G1 4K/5K F	67W	0.56	0.32	0.28	0.24	N/A	N/A
HC 135 G1 4K/5K F	97W	0.81	0.47	0.40	0.35	N/A	N/A
HC 190 G1 4K/5K F	140W	1.17	0.67	0.58	0.51	0.40	0.29
HC 250 G1 4K/5K F	180W	1.5	0.87	0.75	0.65	0.52	0.38

PERFORMANCE COMPARISON

Product Series	Wattage	Lumens	Efficacy (LPW)	Replaces	Voltage	Max Mounting Height
HC 95	67W	9,400 Lm	140	200W	120-277V	15-25 ft
HC 135	97W	13,700 Lm	141	250W	120-277V	15-25 ft
HC 190	140W	19,100 Lm	136	320W	120-277V/ 347-480V	20-35 ft
HC 250	180W	25,000 Lm	139	400W	120-277V/ 347-480V	20-35 ft

Due to continuous product improvements, specification and/or equipment updates may change without notice.