

# NationalLED

## Sky Max Linear High Bay



Project  Date

Catalog Number  Type



### Specifications

#### Construction

- Rugged cold-rolled steel plate corrosion-resistant housing.
- Ultra-Compact, Sturdy Design saves freight and space on lifts and racks during installation.
- Visual comfortable light comes from a simple contour.

#### Performance

- Semi-frosted Diffuser for max lumen output.
- Prismatic diffuser for least glare light.
- The aisle optics for a excellent vertical illumination in areas such as aisles.

#### Electrical

- Universal 120-277 VAC or 347/480 VAC input voltage.
- 0-10V dimming driver standard for 10% to 100% dimming.
- 6KV surge protection.
- Operating temperature is -40°F to 122°F.

Note: Operating with emergency battery temperature range: +32°F- +122°F.

#### Mounting

- Steel wire rope mount (default).
- Pendant mount (option).
- Surface mount (option).

#### Controls

- Optional Occupancy sensor, Microwave sensor, Multifunction Sensor or daylight sensor.
- Optional Bluetooth sensor or Bluetooth controller.
- Silvair Luminaire Level Lighting Control (LLLC) optional
- Sharkward Luminaire Level Lighting Control (LLLC) optional.
- Haisen Luminaire Level Lighting Control (LLLC) optional.
- Also compatible with 3rd party smart network control system.
- Compatible with high end trim.

#### Lifespan

- Estimated 50,000-hour LED lifespan based on IES LM-80 results and TM-21 calculations.

#### Certifications

- UL cUL damp location listed.
- DesignLights Consortium™ Qualified.

Note: Please refer to the DLC website for specific product qualifications at [www.designlights.org](http://www.designlights.org).

#### Warranty

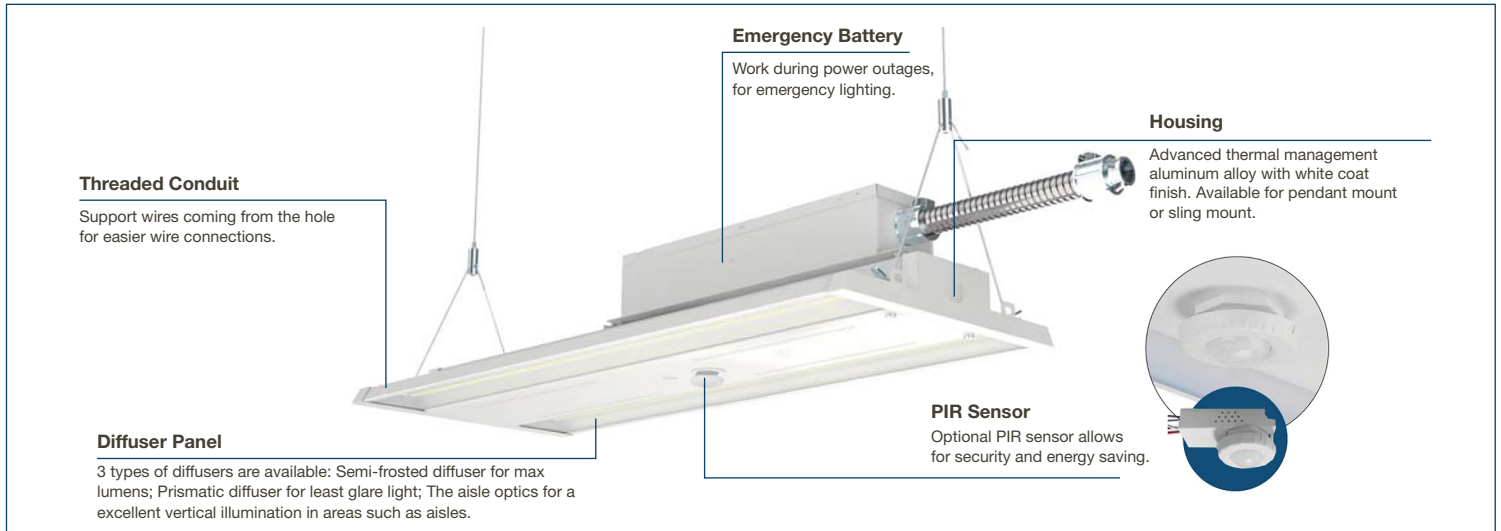
- Standard 5-year limited warranty.
- 10-year Optional

### ORDERING GUIDE

Example: **SMLHB 90W LV 4K CD WS B S BLANK**

Fixture Type	Wattage	Input Voltage	CCT	Lens	Sensor (Option)	Backup Battery (Option)	Surge Protector	Internal Code
<input type="text"/>	<input type="text"/>	<input type="text"/>	<input type="text"/>	<input type="text"/>	<input type="text"/>	<input type="text"/>	<input type="text"/>	<input type="text"/>
<b>SMLHB</b> Linear high bay series	<b>90W</b>	<b>LV 120-277V</b>	<b>4K 4000K</b>	<b>CD</b> Semi-frosted Diffuser	<b>WS</b> PIR Sensor	<b>WB</b> Emergency Battery	<b>WS</b> With Surge Protector	<b>Blank</b>
	<b>130W</b>	<b>HV2 347-480V</b>	<b>5K 5000K</b>	<b>PD</b> Prismatic Diffuser	<b>Blank</b> Without Sensor	<b>Blank</b> Without Emergency Battery	<b>Blank</b> Without Surge Protector	<b>Alphanumeric</b>
	<b>145W</b>			<b>AL</b> Aisle Optic				
	<b>175W</b>							
	<b>185W</b>							
	<b>210W</b>							
	<b>220W</b>							
	<b>270W</b>							
	<b>278W</b>							
	<b>300W</b>							
	<b>310W</b>							

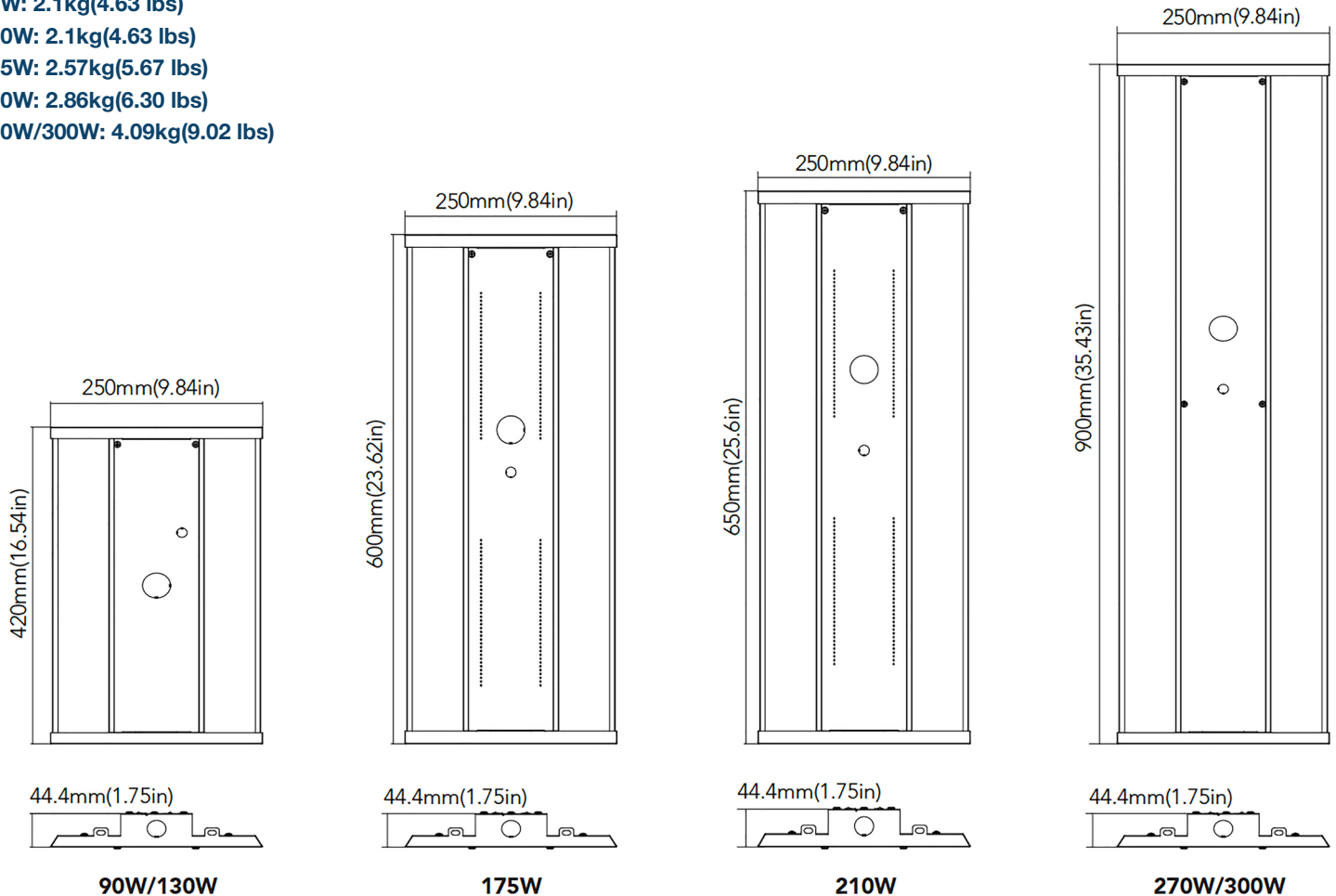
## Structural Design



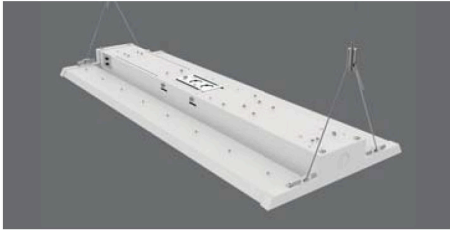
## Dimensions unit: inch/mm

### Weight:

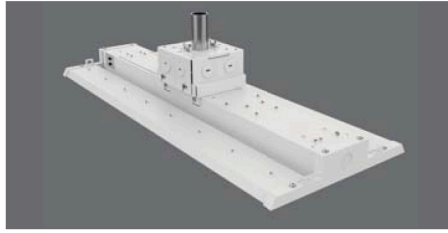
- 90W: 2.1kg(4.63 lbs)
- 130W: 2.1kg(4.63 lbs)
- 175W: 2.57kg(5.67 lbs)
- 210W: 2.86kg(6.30 lbs)
- 270W/300W: 4.09kg(9.02 lbs)



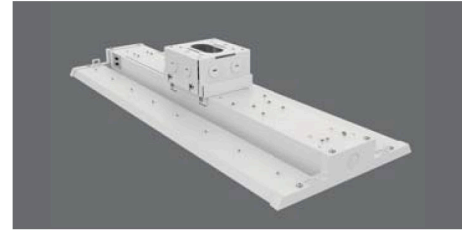
## Mounting



Mounting With Steel Wire Rope



Conduit Pendant Mount



Surface Mounting

## Optic Options

Various optics diffusers and mounting options covering all your application needs.



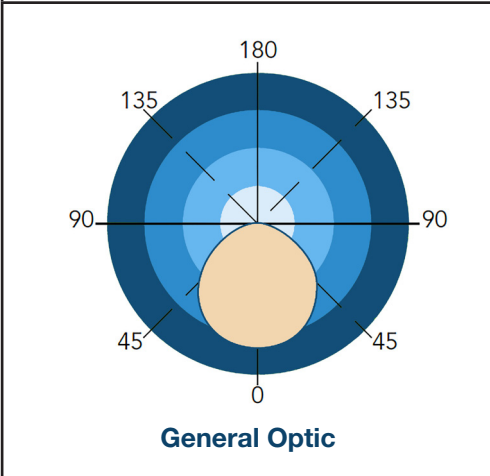
Semi-frosted Diffuser (High efficacy)



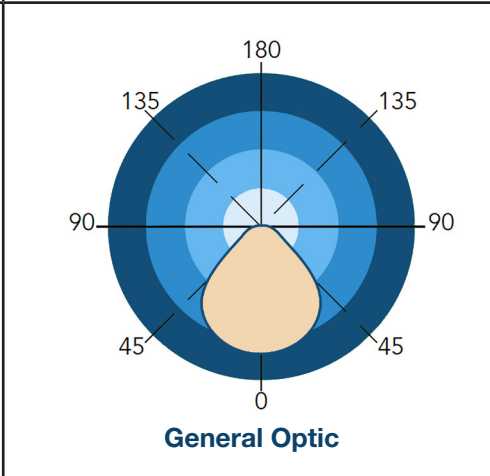
Prismatic Diffuser Low glare)



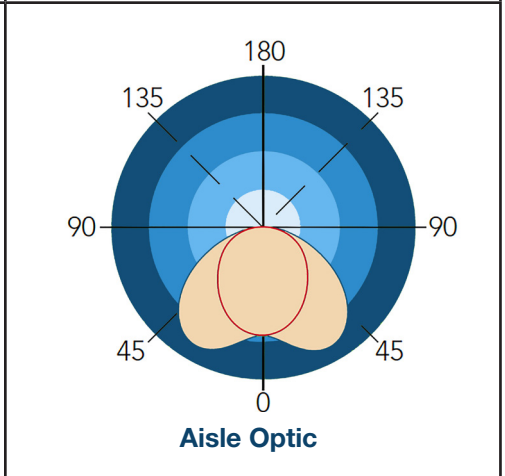
Textured Diffuser (Aisle Optic)



General Optic



General Optic



Aisle Optic

## Performance Data

SYSTEM WATTS	VOLTAGE	LENS	4000K(CRI70)		5000K(CRI70)		DLC
			LUMENS	LPW	LUMENS	LPW	
90W	120-277VAC 347-480VAC	Semi-frosted Diffuser	12700lm	141 lm/W	12700lm	141 lm/W	Standard
		Prismatic Diffuser	12500lm	139 lm/W	12500lm	139 lm/W	Premium
		Aisle Optic	12000lm	133 lm/W	12000lm	133 lm/W	/
130W	120-277VAC	Semi-frosted Diffuser	18600lm	143 lm/W	18600lm	143 lm/W	Standard
		Prismatic Diffuser	18000lm	138 lm/W	18000lm	138 lm/W	Premium
		Aisle Optic	16500lm	127 lm/W	16500lm	127 lm/W	/
145W	347/480VAC	Semi-frosted Diffuser	19100lm	132 lm/W	19200lm	132 lm/W	Standard
		Prismatic Diffuser	20000lm	138 lm/W	20000lm	138 lm/W	Premium
		Aisle Optic	16800lm	116 lm/W	16800lm	116 lm/W	/
175W	120-277VAC	Semi-frosted Diffuser	25000lm	143 lm/W	25000lm	143 lm/W	Standard
		Prismatic Diffuser	25000lm	143 lm/W	25000lm	143 lm/W	Premium
		Aisle Optic	22800lm	130 lm/W	22800lm	130 lm/W	/
185W	347/480VAC	Semi-frosted Diffuser	25300lm	137 lm/W	25300lm	137 lm/W	Standard
		Prismatic Diffuser	26000lm	141 lm/W	26000lm	141 lm/W	Premium
		Aisle Optic	23000lm	124 lm/W	23000lm	124 lm/W	/
210W	120-277VAC	Semi-frosted Diffuser	30600lm	146 lm/W	30600lm	146 lm/W	Standard
		Prismatic Diffuser	30500lm	145 lm/W	30500lm	145 lm/W	Premium
		Aisle Optic	28000lm	133 lm/W	28000lm	133 lm/W	/
220W	347/480VAC	Semi-frosted Diffuser	31000lm	141 lm/W	31000lm	141 lm/W	Standard
		Prismatic Diffuser	31000lm	141 lm/W	31000lm	141 lm/W	Premium
		Aisle Optic	28200lm	128 lm/W	28200lm	128 lm/W	/
270W	120-277VAC	Semi-frosted Diffuser	37000lm	137 lm/W	37000lm	137 lm/W	Standard
		Prismatic Diffuser	38000lm	141 lm/W	38000lm	141 lm/W	Premium
		Aisle Optic	34000lm	126 lm/W	34000lm	126 lm/W	/
278W	347/480VAC	Semi-frosted Diffuser	37500lm	135 lm/W	37500lm	135 lm/W	Standard
		Prismatic Diffuser	38500lm	138 lm/W	38500lm	138 lm/W	Premium
		Aisle Optic	34200lm	123 lm/W	34200lm	123 lm/W	/
300W	120-277VAC	Semi-frosted Diffuser	41500lm	138 lm/W	41500lm	138 lm/W	Standard
		Prismatic Diffuser	42000lm	140 lm/W	42000lm	140 lm/W	Premium
		Aisle Optic	36000lm	120 lm/W	36000lm	120 lm/W	/
310W	347/480VAC	Semi-frosted Diffuser	42000lm	135 lm/W	42000lm	135 lm/W	Standard
		Prismatic Diffuser	42800lm	138 lm/W	42800lm	138 lm/W	Premium
		Aisle Optic	36200lm	116 lm/W	36200lm	116 lm/W	/

## Electrical Data

Number of Drivers	Driver Current (mA)	Nominal Power (W)	INPUT VOLTAGE (V)	CURRENT (Amps)
1	850	90	120	0.75
		90	208	0.43
		90	240	0.38
		90	277	0.32
1	2400	90	347	0.26
		90	480	0.19
1	1200	130	120	1.08
		130	208	0.63
		130	240	0.54
		130	277	0.47
		145	347	0.42
		145	480	0.30
1	1060	175	120	1.46
		175	208	0.84
		175	240	0.73
		175	277	0.63
		185	347	0.53
		185	480	0.39
1	1060	210	120	1.75
		210	208	1.01
		210	240	0.88
		210	277	0.76
		220	347	0.63
		220	480	0.46
2	2400	270	120	2.25
		270	208	1.30
		270	240	1.13
		270	277	0.97
		278	347	0.80
		278	480	0.58
2	2400	300	120	2.50
		300	208	1.44
		300	240	1.25
		300	277	1.08
		310	347	0.89
		310	480	0.65