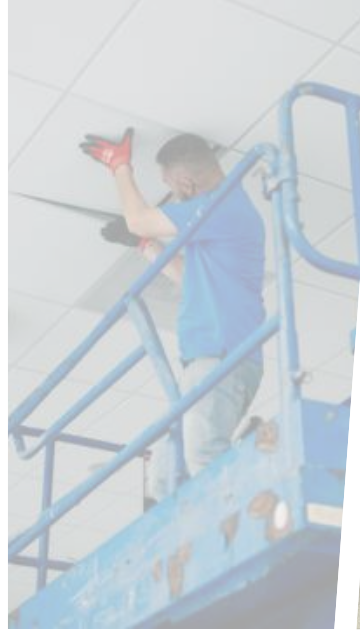


LED Luminaires

for Indoor and Outdoor Applications



Illuminating Success

National LED, renowned for its impressive projects across Canada, Hawaii, and the US, offers turn-key LED solutions to commercial and industrial clients. We are your go-to for innovative lighting.

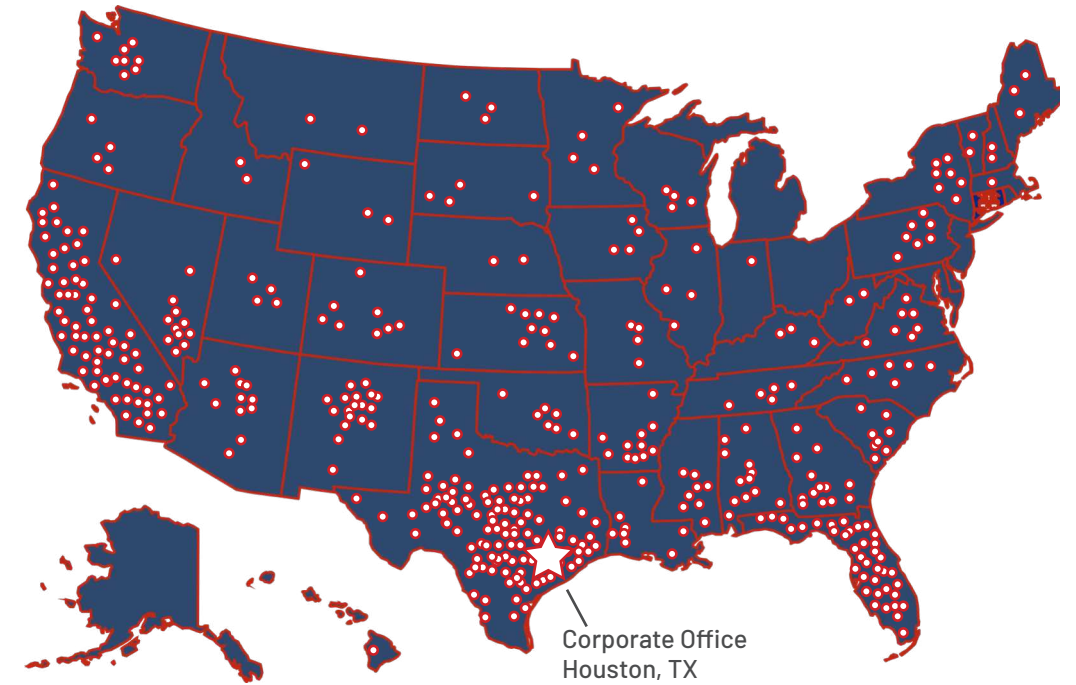


National LED

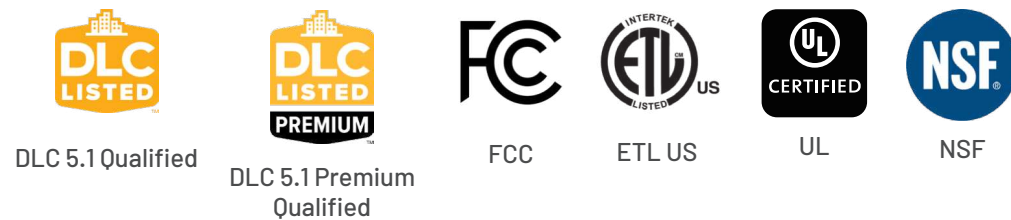
**Nationwide Turn-key LED Lighting Solutions.
Direct to customer shipping of LED products.**

National LED

At National LED, we excel at handling projects of any size or complexity. We've completed impressive projects across Canada, Hawaii, and the US. Whether multi-location or single-site, count on our professional and experienced team for timely, budget-conscious completion.



CERTIFICATIONS



WARRANTIES



10-Year Warranty
NLED Lighting's 10-year limited warranty, 10-day satisfaction guarantee, and 1-year labor warranty.



5-Year Warranty
NLED Lighting's 5-year limited warranty and 10-day satisfaction guarantee.

We Sell and Install LED Lighting Across the Nation

We service the entire U.S. and Canada.
Our Corporate office is located in Houston, TX

Over 5,000+ Installations in the U.S.	USA Based Customer Service	FAST Ship Next Day
---	--	---------------------------------

Clients We Have Served Across the Nation



TABLE OF CONTENTS

★ = New

Interior 01

High Bays

- 05 ★ LED Selectable High Bay
- ★ LED Selectable High Bay
- 06 ★ LED Round High Bay
- ★ LED Selectable Extreme High Bay

Controls Ready

- 07 LED Bluetooth Troffer
- LED Bluetooth Strip

Panels & Troffers

- 08 ★ LED Bluetooth Selectable Backlit Panel
- LED Selectable Troffer

Strips & Wraparound

- 09 LED Selectable Strip
- LED Selectable Wraparound
- 10 LED Selectable Strip
- LED Selectable Wraparound
- 11 LED Selectable Stairwell

Vapor Tight

- 12 ★ LED Selectable Vapor Tight Strip
- ★ LED Selectable Vapor Tight High Bay

Architectural 13

Linear

- 15 ★ LED Selectable Slim Architectural Linear

Commercial

- 18 ★ LED Selectable Slot Panel
- LED Selectable Luxe Troffer
- 19 LED Selectable Luxe Backlit Panel
- 20 LED T-Grid Linear Light
- 21 LED Slim Cove Light

Architectural (Continued) 13

Commercial

- 22 LED Suspending Semi-Direct
- LED Suspending Vertical Linear

Downlights 23

Gimbal

- 25 ★ LED Downlight-Gimbal Direct
- ★ LED Downlight-Gimbal Regress
- 26 ★ LED Downlight-Gimbal Swivel
- ★ LED Downlight-Gimbal Wafer
- 27 ★ LED Downlight-Regress

Commercial

- 28 LED Selectable Downlights
- ★ LED Selectable Surface Mount Downlight
- 29 ★ LED E26 Plug Base Downlight
- ★ LED Selectable Retrofit Downlight

Exterior 31

Area Lights

- 33 ★ LED Selectable Area Light
- ★ LED Selectable Area Light
- 34 LED Area Light
- 35 LED Dusk To Dawn

Flood Lights

- 36 ★ LED Selectable Round Floodlights
- LED Selectable Flood Light
- 37 LED Flood Light Series
- LED Flat Flood Light Series
- 38 LED Flat Flood Light Series

String

- 38 ★ LED High Impact String Lights

Exterior (Continued)

Wall Packs

- 39 ★ LED Selectable Cutoff Wall Pack
- LED Selectable Full Cutoff Wall Pack
- 40 LED Select Selectable Wall Pack
- LED Wall Mount Cylinder

Canopy

- 41 ★ LED Selectable Canopy

Garage

- 41 ★ LED Selectable Parking Garage
- 42 LED Versatile Parking Garage

Roadway

- 42 LED Roadway Area Light

Landscape 43

Post Top

- 45 LED Selectable Post Top

Bollard

- 45 LED Bollard Luminaire

Sports Lighting 47

Sports Light

- 49 ★ LED Remote Driver Sports Light
- 50 ★ LED RGB Sports Light
- 51 LED Sports Light Series
- 52 LED STRIKER Series

Smart Lighting System 55

LED Lighting Controls

- 56 LED Lighting Controls

Specialty 57

Hazardous Location

- 59 Round High Bay
- Viento Flood Large
- Viento Flood Small
- 60 Vapor Tight Linear
- Vapor Tight High Bay

Industrial

- 61 Guardian
- Vapor Tight Co-Extruded
- Vapor Tight Linear
- 62 Vapor Tight High Bay
- Vapor Tight Slim Linear

INTERIOR



05 High Bays

07 Controls Ready

08 Panels & Troffers

09 Strips & Wraparound

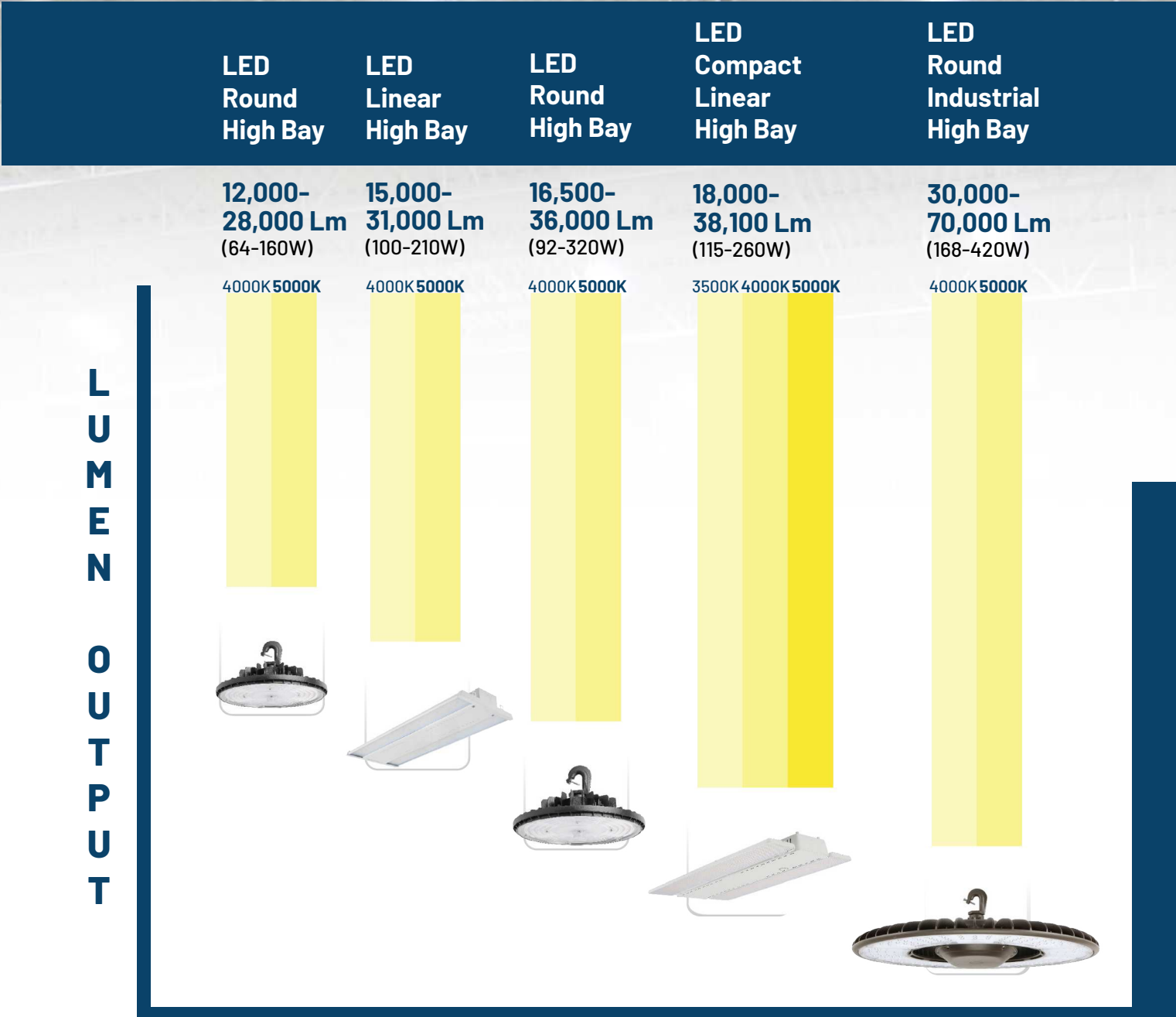
12 Vapor Tight

FROM **12,000**
TO
70,000
LUMENS



We've got you covered!

LED SELECTABLE HIGH BAY LINEUP



LED Selectable High Bay

Specifications

- Switch Selectable
18,000 - 38,100 Lumens
- Switch Selectable
3500K - 5000K CCT
- Switch Selectable
115 - 260 Watts

Controls Capability

- Motion Sensor
- Bluetooth Node
- Emergency Backup

Dimensions

20.67" x 12.4" x 2.05"



CONTRACTOR XP



LED Round High Bay

Specifications

- Switch Selectable
12,000 - 36,000 Lumens
- Switch Selectable
4000K - 5000K CCT
- Switch Selectable
64 - 230 Watts

Controls Capability

- Motion Sensor
- Bluetooth Node
- Emergency Backup

Dimensions

10.7" x 7.5"



CONTRACTOR XP



*Custom color also available.



Pre-installed Emergency Battery with mounting bracket.



LED Selectable High Bay

Specifications

- Switch Selectable
14,800 - 31,000 Lumens
- Switch Selectable
4000K - 5000K CCT
- Switch Selectable
100 - 225 Watts

Controls Capability

- Motion Sensor
- Bluetooth Node
- Emergency Backup

Dimensions

25.6" x 9.84" x 1.75"

CONTRACTOR XP



LED Selectable Extreme High Bay

Specifications

- Switch Selectable
30,000 - 70,000 Lumens
- Switch Selectable
4000K - 5000K CCT
- Switch Selectable
168 - 420 Watts

Controls Capability

- Motion Sensor
- Emergency Backup

Dimensions

24.25" Circumference x 8.73"



CONTRACTOR XP





LED Bluetooth Troffer

Specifications

- App Controlled
5,800 Lumens Max
- App Controlled
3000K - 5000K CCT
- App Controlled
45 Watts Max

Controls Capability

Motion Sensor

Dimensions

23.7" x 23.7" x 2.1"
47.8" x 23.7" x 2.1"

CONTROL XP



LED Bluetooth Selectable Backlit Panel

Specifications

- Switch Selectable
2,750 - 5,500 Lumens
- Switch Selectable
3500K - 5000K CCT
- Switch Selectable
25 - 50 Watts

Controls Capability

Motion Sensor
Emergency Backup

Dimensions

1' x 4'
2' x 2'
2' x 4'

CONTRACTOR XP



LED Bluetooth Strip

Specifications

- App Controlled
9,900 Lumens Max
- App Controlled
3000K - 5000K CCT
- App Controlled
75 Watts Max

Controls Capability

Motion Sensor

Dimensions

47.3" x 2.8" x 2.5" (4 ft)
94.2" x 2.8" x 2.5" (8 ft)



CONTROL XP



LED Selectable Troffer

Specifications

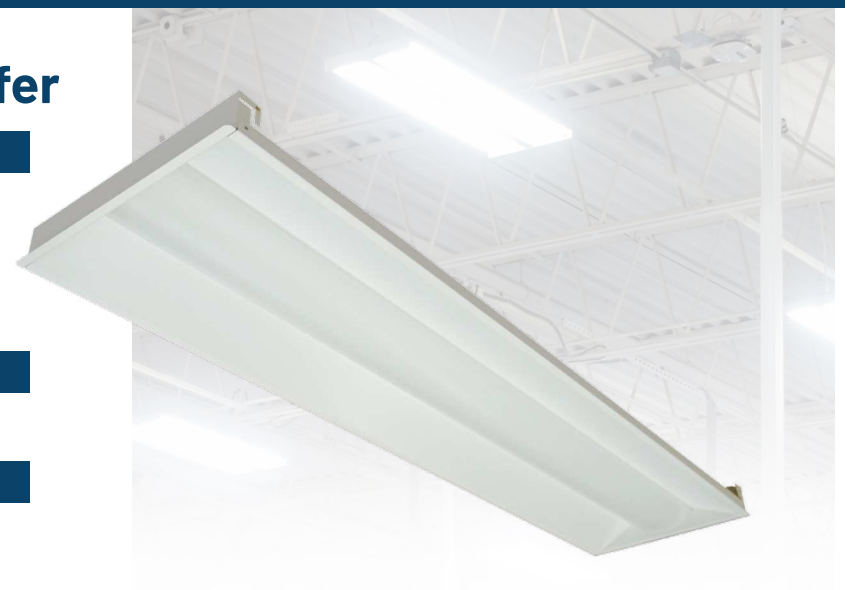
- Switch Selectable
2,780 - 5,670 Lumens
- Switch Selectable
3500K - 5000K CCT
- Switch Selectable
20 - 45 Watts

Controls Capability

Motion Sensor
Emergency Backup

Dimensions

47.8" x 11.75" x 2"
23.75" x 23.75" x 2.13"
47.8" x 23.75" x 2.13"



CONTRACTOR XP



LED Selectable Strip

Specifications

-  Switch Selectable
4,488 - 11,800 Lumens
-  Switch Selectable
3500K - 5000K CCT
-  Switch Selectable
34 - 90 Watts

Controls Capability

Motion Sensor
Emergency Backup

Dimensions

47.3" x 3.3" (4 ft)
94.2" x 3.3" (8 ft)

CONTRACTOR XP



LED Selectable Wraparound

Specifications

-  Switch Selectable
3,950 - 5,600 Lumens
-  Switch Selectable
3500K - 5000K CCT
-  Switch Selectable
32 - 48 Watts

Controls Capability

Motion Sensor

Dimensions

47.6" x 5.3" x 2.1"

CONTRACTOR XP



LED Selectable Strip

Specifications

-  Switch Selectable
3,120 - 10,400 Lumens
-  Switch Selectable
3500K - 5000K CCT
-  Switch Selectable
24 - 80 Watts

Controls Capability

Motion Sensor
Emergency Backup

Dimensions

47.3" x 2.5" x 2.2" (4 ft) • 94.2" x 2.5" x 2.2" (8 ft)

CONTRACTOR XP



LED Selectable Wraparound

Specifications

-  Switch Selectable
3,800 - 5,300 Lumens
-  Switch Selectable
3500K - 5000K CCT
-  Switch Selectable
28 - 40 Watts

Controls Capability

Motion Sensor
Emergency Backup

Dimensions

46" x 9.7" x 3.4"

CONTRACTOR XP





LED Selectable Stairwell

Specifications

- Switch Selectable
2,660 - 6,930 Lumens
- Switch Selectable
3500K - 5000K CCT
- Switch Selectable
20 - 55 Watts

Controls Capability

Built in Ultra-Sonic Sensor
Emergency Backup

Dimensions

23.9 x 5.6" x 4.9 (2 FT)
49.7" x 5.6" x 4.9 (4 FT)

CONTRACTOR XP



LED Selectable Vapor Tight Strip

Specifications

- Switch Selectable
1,950 - 12,000 Lumens
- Switch Selectable
3500K - 5000K CCT
- Switch Selectable
15 - 90 Watts

Controls Capability

Motion Sensor
Emergency Backup

Dimensions

24.8" x 5" x 3.6" (2 FT)
49.8" x 5" x 3.6" (4 FT)
94.5" x 5" x 3.6" (8 FT)

CONTRACTOR XP



Illuminate your space with our cutting-edge interior LED light fixtures.

Contact Our Sales Representatives for more Information.

832-459-4447

LED Selectable Vapor Tight High Bay

Specifications

- Switch Selectable
16,000 - 32,000 Lumens
- Switch Selectable
3500K - 5000K CCT
- Switch Selectable
100 - 200 Watts

Controls Capability

Motion Sensor

Dimensions

47.5" x 10.5" x 4.5"



CONTRACTOR XP



ARCHITECTURAL



15 | **Linear Architectural**

18 | **Commercial Architectural**

LED Selectable Slim Architectural Linear

Specifications

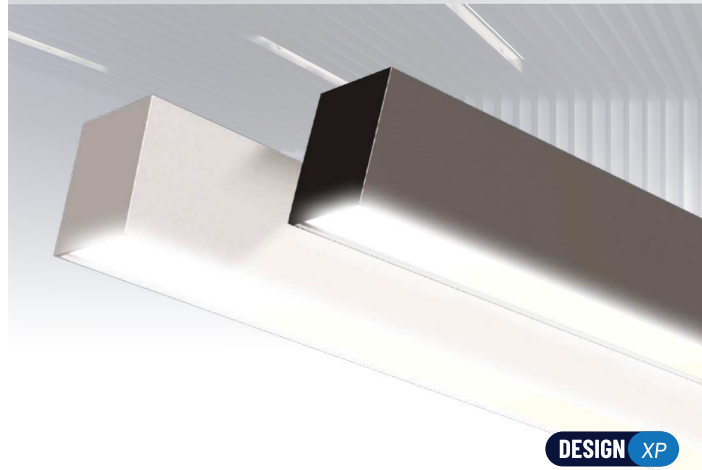
- Switch Selectable
1,760 - 11,520 Lumens
- Switch Selectable
3000K - 4000K CCT
- Switch Selectable
15 - 100 Watts

Controls Capability

Motion Sensor
Emergency Backup

Dimensions

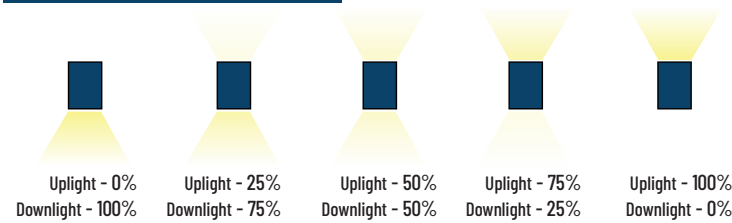
23.86" x 2.75" x 3.15"
47.48" x 2.75" x 3.15"
94.72" x 2.75" x 3.15"



DESIGN XP

SELECTABLE DISTRIBUTION

*Also available in Black.

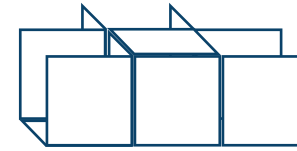


POWER CABLE

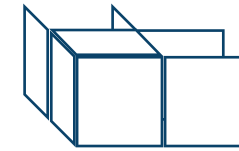
(18 Gauge, 5 conductors)



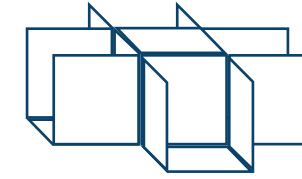
Accessories



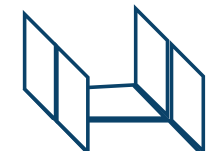
T-Joiner



L-Joiner



X-Joiner



Buckle

Mounting Options

- Drop Ceiling Suspension Kit
- Drywall Suspension Kit
- STB Suspension Kit
- Wall Mount
- Surface Mount

Lens Options

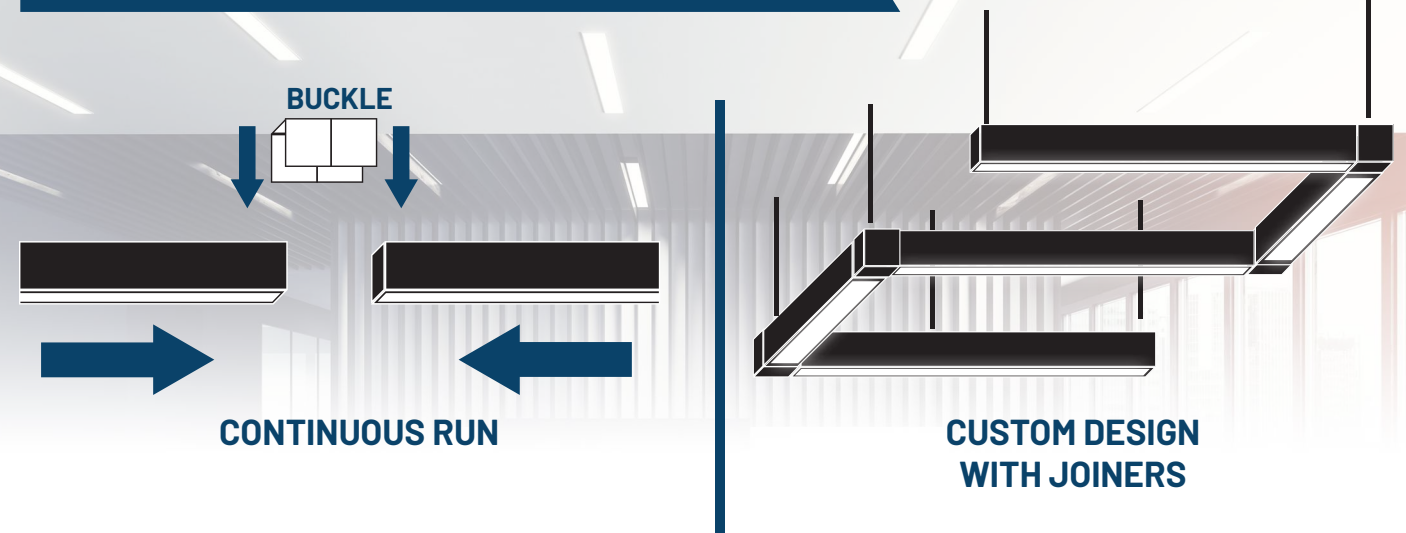
- Parabolic Lens
- Louver Kit

Metal Cover

- Down Metal Cover (For 100% uplight)

(For complete options, accessories, and specification details, please reference full spec sheet.)

Design Pattern



(For complete options, accessories, and specification details, please reference full spec sheet.)

DESIGN XP

Discover the Design line from National LED. Lighting for modern, affordable, and customizable lighting solutions. Whether for architectural, upscale, or aesthetic needs, this top-selling line offers sleek design, easy installation, and bright LED illumination.

National LED

Nationwide Turn-key LED Lighting Solutions.
Direct to customer shipping of LED products.

LED Selectable Slot Panel

Specifications

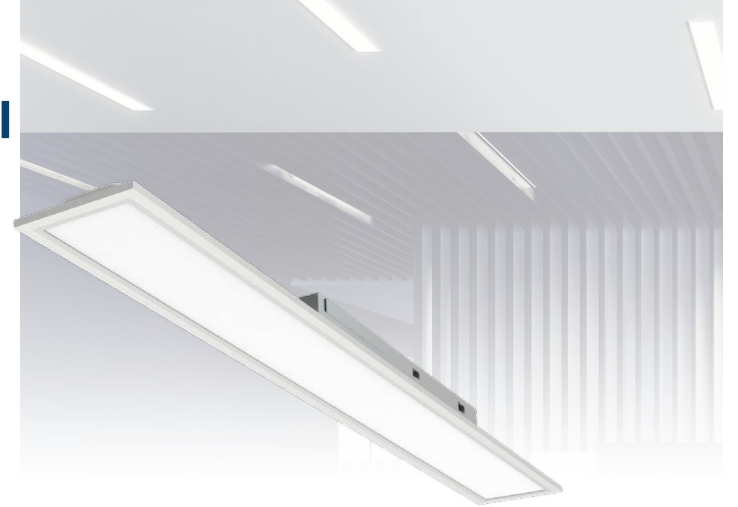
- Switch Selectable
1,100 - 8,800 Lumens
- Switch Selectable
3000K - 5000K CCT
- Switch Selectable
10 - 80 Watts

Controls Capability

- Motion Sensor
- Emergency Backup

Dimensions

- 24" x 5.9" x 1.4" (2 FT)
- 48" x 5.9" x 1.4" (4 FT)
- 96" x 5.9" x 2" (8 FT)



DESIGN XP



LED Selectable Luxe Troffer

Specifications

- Switch Selectable
2,360 - 5,600 Lumens
- Switch Selectable
3500K - 5000K CCT
- Switch Selectable
20 - 50 Watts

Controls Capability

- Motion Sensor
- Emergency Backup

Dimensions

- 23.8" x 23.8" x 3.9" (2' x 2')
- 47.8" x 23.8" x 3.9" (2' x 4')



DESIGN XP



LED Selectable Luxe Backlit Panel



Specifications

- Switch Selectable
2,750 - 5,500 Lumens
- Switch Selectable
3500K - 5000K CCT
- Switch Selectable
25 - 50 Watts

Controls Capability

Motion Sensor
Emergency Backup

Dimensions

47.72" x 11.77" x 1.74"
23.74" x 23.74" x 1.74"
47.72" x 23.74" x 1.74"

DESIGN XP



LED T-Grid Linear Light

Specifications

- 1,300 - 2,600 Lumens
- 3500K - 4000K CCT
- 10 - 20 Watts

Controls Capability

Emergency Backup

Dimensions

23.96" L • 47.96" L
0.48" x 0.56" • 0.51" x .94"



DESIGN XP

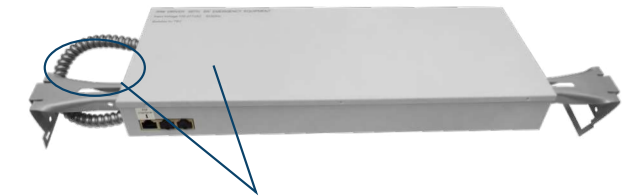


DRIVER

**Also available in 4000K CCT and Standard Ceiling options.*



Each driver supports up to 3 fixtures.



Emergency Backup Emergency Backup Emergency Backup

3 8W Emergency Backup Ports

Sales@NationalLED.com
832-459-4447



LED Slim Cove Light

Specifications

350 - 1,550 Lumens

2700K - 5000K CCT

4 - 16 Watts

Dimensions

12" x 0.87" x 0.86"

24" x 0.87" x 0.86"

36" x 0.87" x 0.86"

48" x 0.87" x 0.86"

DESIGN XP



TRIAC Dimming

ACCESSORIES

*Also available in 3000K, 3500K, 4000K, and 5000K CCT.



Wiring Cable

SCL-WC

Available in 7" length



Extension Cable

SCL-EC

Available in 6", 12", 24", 36", and 70" lengths



Power Cable

SCL-PC

Available in 48" length

LED Suspending Semi-Direct

Specifications

4,254 - 8,598 Lumens

3500K - 4000K CCT

40 - 80 Watts

Dimensions

47.24" x 0.94" x 7.87"

94.48" x 0.94" x 7.87"

DESIGN XP



LED Suspending Vertical Linear

Specifications

4,000 Lumens

Switch Selectable
 3000K - 4000K CCT

40 Watts

Controls Capability

Motion Sensor

Dimensions

46.50" x 1.30" x 7.48"

DESIGN XP



DOWNLIGHTS



25 | **Gimbal Downlights**

28 | **Commercial Downlights**

LED Downlight-Gimbal Direct

Specifications

 **400 - 1,050 Lumens**
Switch Selectable
 **2700K - 5000K CCT**

 **6 - 15 Watts**

Controls Capability

Emergency Backup

Dimensions

2" x 1.45"
3" x 1.79"
5" x 2.25"



360° Rotation



30° Tilt



DESIGN XP



LED Downlight - Gimbal Swivel

Specifications

 **900 Lumens**
Switch Selectable
 **2700K - 5000K CCT**

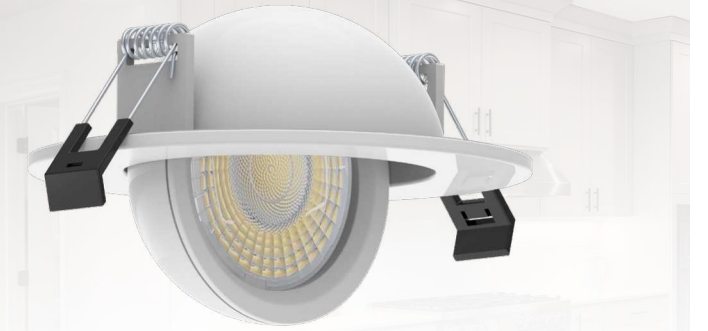
 **12 Watts**

Controls Capability

Emergency Backup

Dimensions

4" x 1.38"



180° Rotation



90° Tilt



DESIGN XP



LED Downlight-Gimbal Regress

Specifications

 **400 - 1,050 Lumens**
Switch Selectable
 **2700K - 5000K CCT**

 **6 - 15 Watts**

Controls Capability

Emergency Backup

Dimensions

2" x 1.97"
3" x 2.52"
5" x 3.03"



360° Rotation



30° Tilt



DESIGN XP



LED Downlight - Gimbal Wafer

Specifications

 **750 - 1,000 Lumens**
Switch Selectable
 **2700K - 5000K CCT**

 **10 - 13 Watts**

Controls Capability

Emergency Backup

Dimensions

4" x 1.48"
6" x 1.89"



180° Rotation



30° Tilt



DESIGN XP



LED Downlight-Regress

Specifications

- 650 - 1,050 Lumens
- Switch Selectable
2700K - 5000K CCT
- 9 - 15 Watts

Controls Capability

Emergency Backup

Dimensions

- 3" x 3.04" (3" Round)
- 3" x 3.04" (3" Square)



DESIGN XP



LED Selectable Downlights

Specifications

- Switch Selectable
595 - 5,000 Lumens
- Switch Selectable
2700K - 5000K CCT
- Switch Selectable
7 - 60 Watts

Controls Capability

Emergency Backup

Dimensions

- 3.54" x 2.27"
- 4.72" x 2.3"
- 5.9" x 3.07"
- 4.33" x 2.4"
- 5.51" x 2.8"



CONTRACTOR XP



Sales@NationalLED.com

832-459-4447

LED Selectable Surface Mount Downlight

Specifications

- Switch Selectable
550 - 1,000 Lumens
- Switch Selectable
2700K - 5000K CCT
- Switch Selectable
6 - 13 Watts

Dimensions

5" x 0.79"



DESIGN XP



LED E26 Plug Base Downlight



CONTRACTOR XP



Specifications

750 - 1,100 Lumens

Switch Selectable
2700K - 5000K CCT

10 - 15 Watts

Controls Capability

Emergency Backup

Dimensions

4" x 3.27"
6" x 2.83"



LED Selectable Retrofit Downlight



CONTRACTOR XP



Specifications

Switch Selectable
750 - 4,000 Lumens

Switch Selectable
2700K - 5000K CCT

Switch Selectable
9 - 48 Watts

Controls Capability

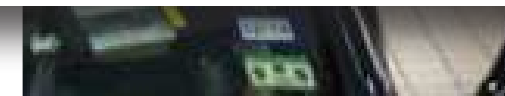
Emergency Backup

Dimensions

4" x 4.2" • 6" x 4.8" • 8" x 5.1" • 10" x 5.6"

National LED

Nationwide Turn-key LED Lighting Solutions.
Direct to customer shipping of LED products.



EXTERIOR



33 **Area Lights**

36 **Flood lights**

38 **String**

39 **Wall Packs**

41 **Canopy & Garage**

42 **Roadway**

LED Selectable Area Light

Specifications

- Switch Selectable
10,000 - 45,000 Lumens
- Switch Selectable
3000K - 5000K CCT
- Switch Selectable
60 - 300 Watts

Controls Capability

Motion Sensor
Bluetooth Node

Dimensions

LS230: 15.6" x 2.5" x 7" • LS450: 24.9" x 2.5" x 7"



CONTRACTOR XP



LED Area Light

Specifications

- 5,500 - 40,200 Lumens
- 4000K - 5000K CCT
- 40 - 300 Watts

Controls Capability

Motion Sensor

Dimensions

12.63" x 9.25" x 2.46"
12.25" x 15.16" x 2.46"
12.25" x 28.7" x 2.45"



CONTRACTOR XP



LED Selectable Area Light

Specifications

- Switch Selectable
6,370 - 43,000 Lumens
- Switch Selectable
4000K - 5000K CCT
- Switch Selectable
40 - 300 Watts

Controls Capability

Motion Sensor

Dimensions

28.24" x 14.84" x 7.66" (Medium)
27.35" x 16" x 8" (Large)



PERFORMANCE XP



*Type IV, and Type V distributions also available. **Also available in custom colors.
***Also available in 70W/9,500 Lm (S), 100W/13,400 Lm (S), 200W/25,000 Lm (M), 300W/40,200 (L), HVU, as well as 5000K CCT versions.

Mounts:





PERFORMANCE XP



LED Dusk To Dawn

Specifications

6,200 - 12,200 Lumens

4000K - 5000K CCT

45 - 90 Watts

Dimensions

9.7" x 7.6"

LED Selectable Round Floodlights

Specifications

Switch Selectable
1,400 - 4,200 Lumens

Switch Selectable
3000K - 5000K CCT

Switch Selectable
10.5 - 30 Watts

Dimensions

8.51" x 6.53"



DESIGN XP



Sales@NationalLED.com

832-459-4447

LED Selectable Flood Light

Specifications

Switch Selectable
1,600 - 18,000 Lumens

Switch Selectable
3000K - 5000K CCT

Switch Selectable
11 - 123 Watts

Controls Capability

Built in Photocell

Dimensions

7.2" x 6.9" x 1.9" (Small)

8.1" x 8.3" x 2" (Medium)

10.4" x 8.3" x 3.3" (Large)



CONTRACTOR XP



LED Flood Light Series

Specifications

 2,000 - 49,500 Lumens

 4000K - 5000K CCT

 15 - 350 Watts

Controls Capability

Emergency Backup

Dimensions

5.90" x 2.55" x 3.82" (Small)

7.87" x 3.12" x 4.80" (Medium)

11.06" x 4.90" x 6.08" (Large)

14.53" x 4.37" x 12.56" (X-Large)

14.53" x 5.23" x 17.99" (Huge)



CONTRACTOR XP



LED Flat Flood Light Series

Specifications

 5,720 - 41,000 Lumens

 4000K - 5000K CCT

 40 - 300 Watts

Controls Capability

Motion Sensor

Dimensions

12.64" x 8.47" x 2.2" (Small)

15.16" x 12.55" x 2.2" (Medium)

23.3" x 12.55" x 2.2" (Large)



CONTRACTOR XP



LED Flat Flood Light Series

Specifications

 10,250 - 51,450 Lumens

 3000K - 5000K CCT

 70 - 380 Watts

Controls Capability

Motion Sensor

Dimensions

9.72" x 14.84" x 7.66" (Medium)

27.35" x 16" x 6.3" (Large)

PERFORMANCE XP



LED High Output String Lights

Specifications

 16,000 Lumens

 5000K CCT

 130 Watts

Dimensions

3.94" x 2.28 x 100'

CONTRACTOR XP



LED Selectable Cutoff Wall Pack

Specifications

- Switch Selectable
2,750 - 13,800 Lumens
- Switch Selectable
3000K - 5000K CCT
- Switch Selectable
18 - 95 Watts

Controls Capability

- Motion Sensor
- Emergency Backup

Dimensions

13.1" x 9.6" x 3.8"



PERFORMANCE XP



LED Selectable Wall Pack

Specifications

- Switch Selectable
3,860 - 11,500 Lumens
- Switch Selectable
3000K - 5000K CCT
- Switch Selectable
26 - 100 Watts

Controls Capability

- Photocell
- Emergency Backup

Dimensions

14.2" x 9.25" x 7.08"



CONTRACTOR XP



LED Selectable Full Cutoff Wall Pack

Specifications

- Switch Selectable
4,000 - 9,800 Lumens
- Switch Selectable
3000K - 5000K CCT
- Switch Selectable
23 - 65 Watts

Controls Capability

- Built in Photocell
- Emergency Backup

Dimensions

13.1" x 9.6" x 3.8"



CONTRACTOR XP



LED Wall Mount Cylinder

Specifications

- Switch Selectable
2,250 - 3,325 Lumens
- Switch Selectable
3000K - 4000K CCT
- Switch Selectable
25 - 35 Watts

Dimensions

4.09" x 4.09" x 7.24" (4" Square)
4.09" x 7.08" (4" Round)



DESIGN XP



LED Selectable Canopy

Specifications

- Switch Selectable
4,000 - 8,400 Lumens
- Switch Selectable
3000K - 5000K CCT
- Switch Selectable
25 - 60 Watts

Controls Capability

- Motion Sensor
- Emergency Backup

Dimensions

9.52" x 9.52" x 3.03"



CONTRACTOR XP



LED Versatile Parking Garage

Specifications

- 5,470 - 11,584 Lumens
- 4000K - 5000K CCT
- 45 - 95 Watts

Controls Capability

- Motion Sensor
- Emergency Backup

Dimensions

23.6" x 6" x 3.7"



PERFORMANCE XP



LED Selectable Parking Garage

Specifications

- Switch Selectable
4,480 - 10,400 Lumens
- Switch Selectable
4000K - 5000K CCT
- Switch Selectable
32 - 80 Watts

Controls Capability

- Motion Sensor
- Emergency Backup

Dimensions

13.04" x 3.26"

PERFORMANCE XP



PERFORMANCE XP



LED Roadway Area Light

Specifications

- 6,350 - 20,000 Lumens
- 4000K - 5000K CCT
- 45 - 150 Watts

Controls Capability

- Motion Sensor
- Emergency Backup

Dimensions

23.84" x 10.43" x 4.25"



LED Selectable Post Top

Specifications

-  Switch Selectable
6,800 - 17,300 Lumens
-  Switch Selectable
3000K - 5000K CCT
-  Switch Selectable
45 - 130 Watts

Controls Capability

Motion Sensor

Dimensions

9.52" x 9.52" x 3.03"



CONTRACTOR XP






PERFORMANCE XP



LED Bollard Luminaire

Specifications

-  **2,500 Lumens**
Switch Selectable
-  **3000K - 5000K CCT**
-  **26 Watts**

Controls Capability

Emergency Backup

Dimensions

9.28"/5.5" x 42"

Illuminate your outdoor space
with our cutting-edge LED
landscape light fixtures.

Contact Our Sales Representatives for more Information.

832-459-4447



SPORTS LIGHTING



LED Remote Driver Sports Light

Specifications

70,000 - 160,000 Lumens

4000K - 5700K CCT

500 - 1200 Watts

Controls Capability



Dimensions

20.8" x 16.9" x 18.8" (Small)

23.8" x 19.7" x 21.7" (Large)



PERFORMANCE XP



LED RGB Sports Light

Specifications

BLUE: 2000 Lm GREEN: 10,000 Lm RED: 12,000 Lm

500 Watts

Controls Capability



Dimensions

20.8" x 16.9" x 18.8"



PERFORMANCE XP



PERFORMANCE DATA

SIZE	SYSTEM WATTS	VOLTAGE	EMA	LUMENS (4000K)	LUMENS (5000K)	LUMENS (5700K)
SMALL	600W	200-480V	4Hx4V	92,000 Lm	92,000 Lm	90,000 Lm
			3Hx3V	92,000 Lm	92,000 Lm	90,000 Lm
LARGE	1200W	200-480V	3Hx3V	16,000 Lm	16,000 Lm	15,000 Lm
			2Hx2V	16,000 Lm	16,000 Lm	15,000 Lm



The driver can either be mounted behind...



...or pole mounted for easier access!

PERFORMANCE DATA

SIZE	SYSTEM WATTS	VOLTAGE	EMA	LUMENS (RED)	LUMENS (GREEN)	LUMENS (BLUE)
SMALL	500W	120-277V 347-480V	4Hx4V	12,000 Lm	10,000 Lm	2,000 Lm



The driver can either be mounted behind...



...or pole mounted for easier access!



LED Sports Light Series

Specifications

 82,000 - 113,000 Lumens

 4000K - 5700K CCT

 600 - 850 Watts

Controls Capability

Advanced Wireless Controls

Dimensions

20.6" x 15.2" x 15.2" (Rec)

23.8" x 18.5" x 17.46" (Pro)

PERFORMANCE XP



LED STRIKER Series

Specifications

 60,000 - 270,000 Lumens

 400 - 1800 Watts

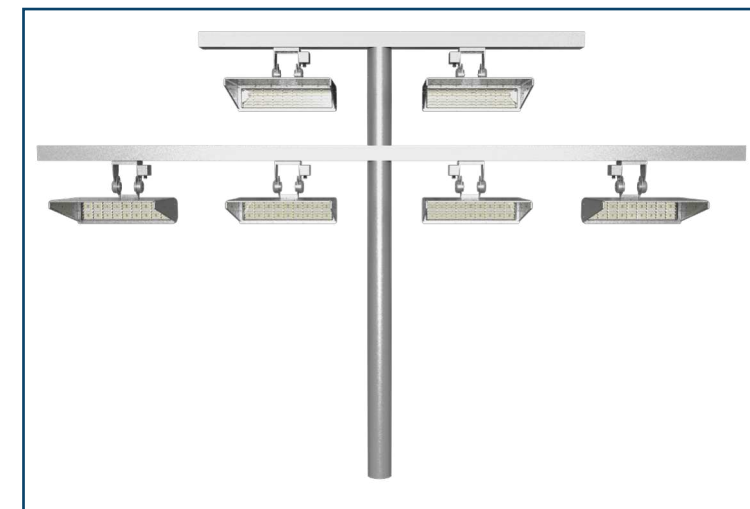
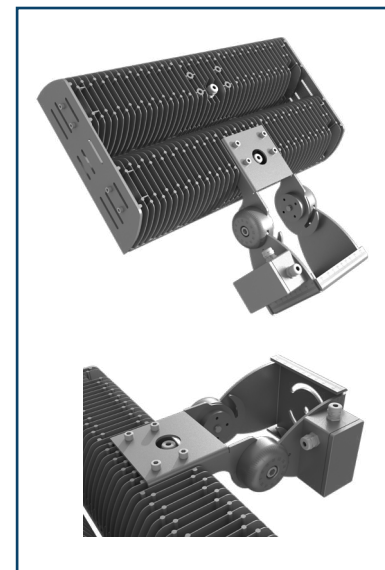
Controls Capability

Advanced Wireless Controls

PERFORMANCE XP



Type-A Top-fixed I



Versatile Mounting

Sales@NationalLED.com

832-459-4447



Nationwide Turn-key LED Lighting Solutions

DESIGN

Our engineers tailor designs to fit your specific requirements and budget.

MANUFACTURING

Our expert team creates tailored LED lights for your installation needs, ensuring top performance and reliability.

INSTALLATION

Our team ensures seamless integration, maximizing efficiency and illuminating your business with brilliance. Our crew has years of experience installing commercial LED lights.

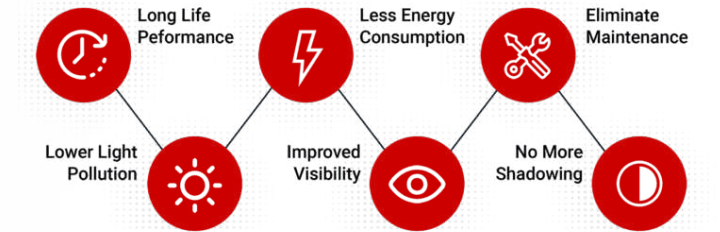
SALES

Our sales team provides expert guidance on a range of sleek designs and cutting-edge technology, specializing in commercial LED lights for diverse industries.

Types of Sports & Stadium Lighting We Service

- Football
- Baseball
- Softball
- Pickleball
- Soccer
- Stadium
- Racetrack
- Athletic Facility
- Tennis Court
- Arena

BENEFITS OF LED LIGHTING



National LED

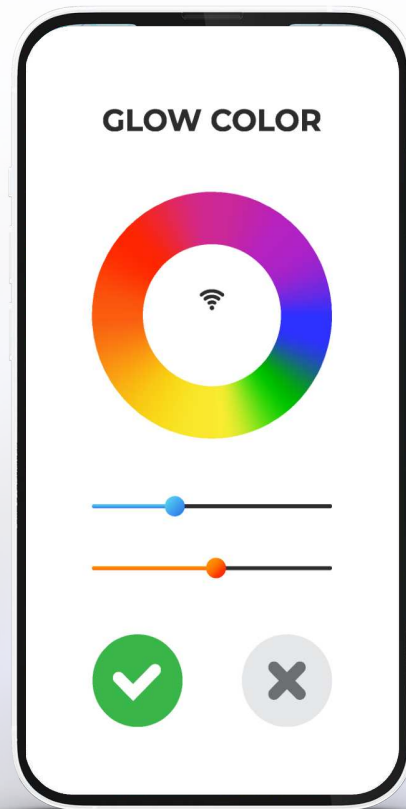
Contact Our Sales Representatives for more Information.

832-459-4447



National LED Smart Lighting System

Unlimited options for LED lighting controls and On/Off controls from your smart phone



Smart lighting systems utilize network connectivity and advanced technology for improved control, automation, and energy management. They enable remote control via mobile apps or voice commands, adjust dynamically based on user preferences and occupancy, and provide energy usage insights for optimization.

Switches and Dimmers



Traditional switches turn lights on/off manually, while dimmers adjust brightness for ambiance control.

Occupancy Sensors



Occupancy sensors detect motion and automatically illuminate spaces. They can shut off lights to save energy when rooms are vacant.

Daylight Harvesting Systems



Daylight harvesting systems adjust artificial lighting based on natural light levels, ensuring consistent illumination while saving energy.

Time-Based Controls

With time-based controls users schedule lighting operations by time, adjusting brightness or activating scenes for various events.

Manual and Automated Scene Controls



Users preset and recall lighting scenes, creating different atmospheres with a push of a button or through centralized systems.

Centralized Control Systems

These systems manage lighting across buildings or locations, offering features like remote monitoring, scheduling, energy management, and integration with other systems.



59 | **Hazardous Location**

61 | **Industrial LED**

Round High Bay Hazardous Location

Class 1 - Division 2 - Groups A/B/C/D

Specifications

 12,000 - 30,000 Lumens

 3000K - 5000K CCT



HAZARDOUS LOCATION

Vapor Tight Linear Hazardous Location

Class 1 - Division 2 - Groups A/B/C/D

Specifications

 2000 - 10000 Lumens

 3000K - 5000K CCT



HAZARDOUS LOCATION

Viento Flood Large Hazardous Location

Class 1 - Division 2 - Groups A/B/C/D

Specifications

 14286 - 37267 Lumens

 4000K CCT



HAZARDOUS LOCATION

Vapor Tight High Bay Hazardous Location

Class 1 - Division 2 - Groups A/B/C/D

Specifications

 9000 - 18000 Lumens

 3000K - 4000K CCT



HAZARDOUS LOCATION

Viento Flood Small Hazardous Location

Class 1 - Division 2 - Groups A/B/C/D

Specifications

 5500 - 10000 Lumens

 3000K - 5000K CCT



HAZARDOUS LOCATION

Sales@NationalLED.com

832-459-4447



Guardian

SLL

Specifications

-  50000 - 100000 Lumens
-  4000K - 5000K CCT



Vapor Tight High Bay

VTH

Specifications

-  9000 - 30000 Lumens
-  3000K - 5000K CCT



Vapor Tight Co-Extruded

VTC

Specifications

-  2000 - 10000 Lumens
-  3000K - 5000K CCT



Vapor Tight Slim Linear

VTS

Specifications

-  3500 - 5500 Lumens
-  3000K - 5000K CCT



Vapor Tight Linear

VTE

Specifications

-  2000 - 10000 Lumens
-  3000K - 5000K CCT



Contact Our Sales Representatives for more Information.

832-459-4447

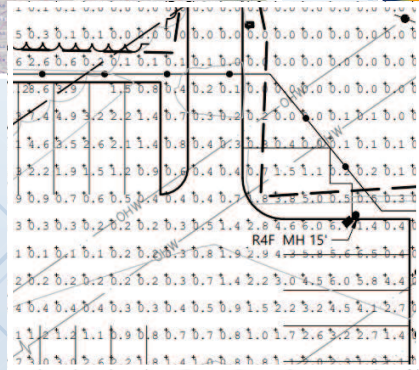
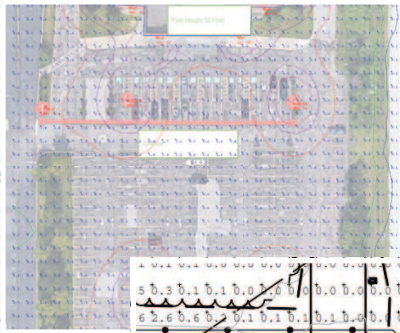
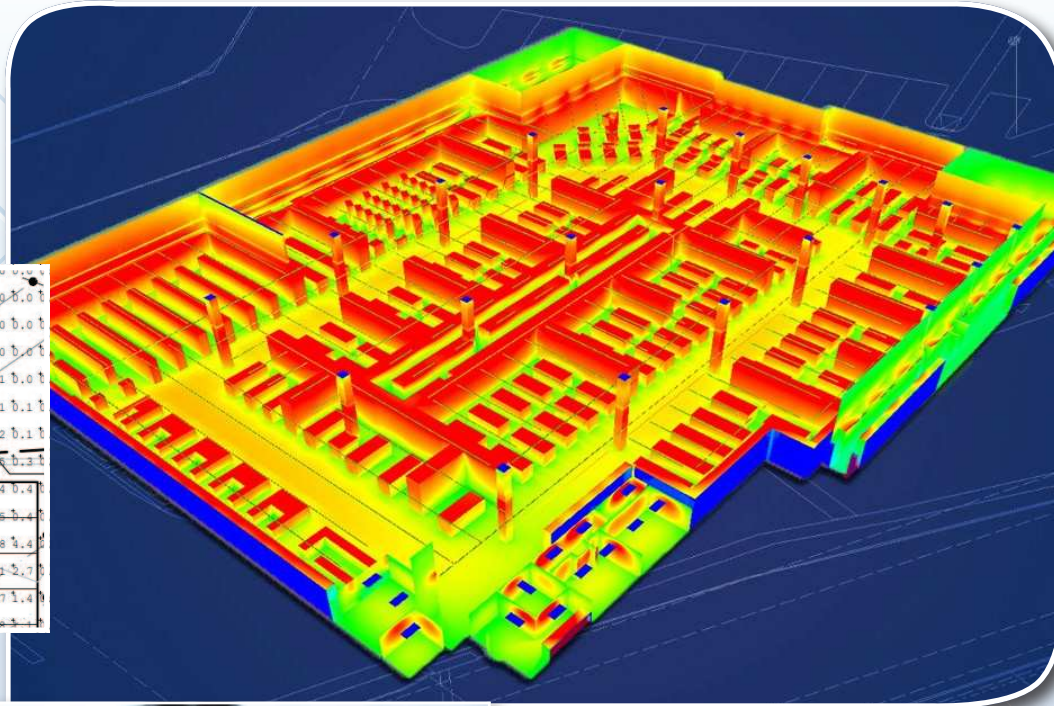
IN-HOUSE PHOTOMETRICS

Our team of Lighting Specialists are on staff in our Houston, TX office M-F, ready to help you have the best lighting for you and your projects.

Send all inquires to:
Sales@NationalLED.com

Or contact your local National LED Lighting
rep to help you along the way.

832-459-4447



National LED

Sales

832-459-4447

Sales@NationalLED.com

NationalLed.com